

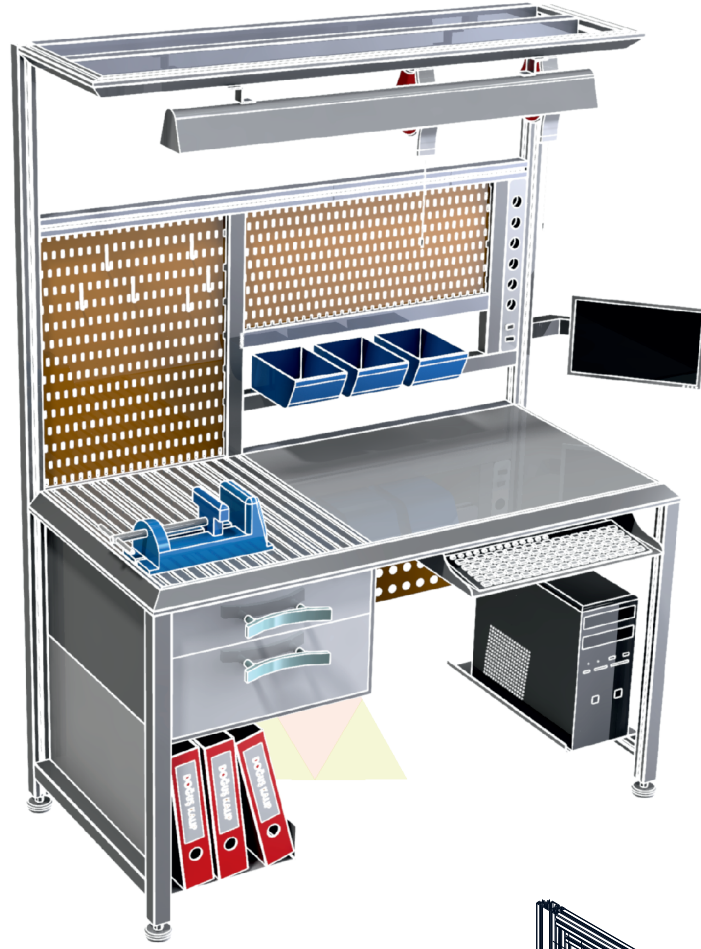


# DOĞUŞ KALIP 2016 INNOVATIONS

## Work Security Solutions

### Standard Dimensions

- 1- 1500x1800
- 2- 1750x2000
- 3- 2000x2250

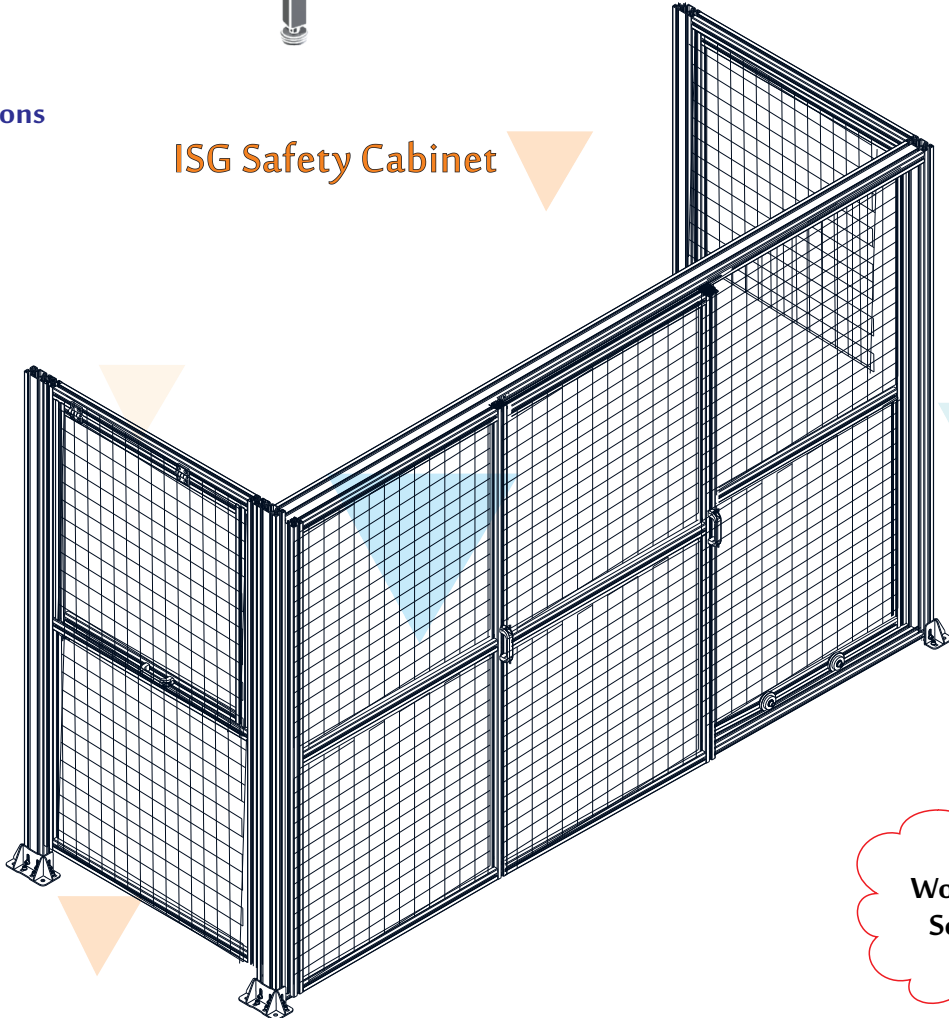


Assembly and Testing  
Tables

### Standard Dimensions

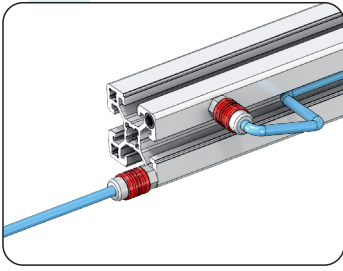
- 1- 600x1000
- 2- 800x1200
- 3- 1000x1500
- 4- 1200x1800
- 5- 1500x2000

## ISG Safety Cabinet

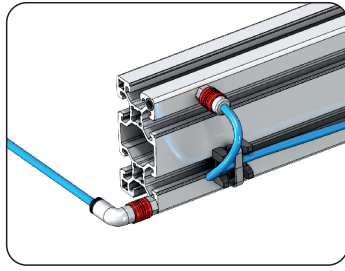


Work Safety  
Solutions

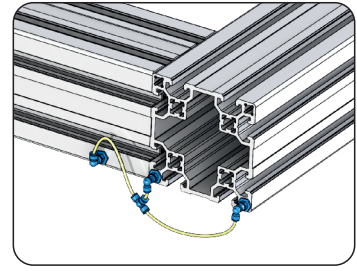
# DESIGN FEATURES OF OUR NEW SERIES PROFILES



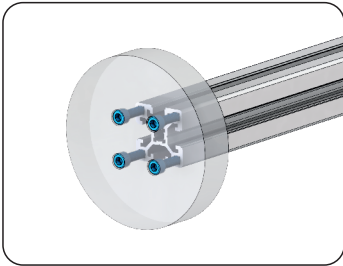
**Oil and Air Slot Feature in Single Slot Profiles**



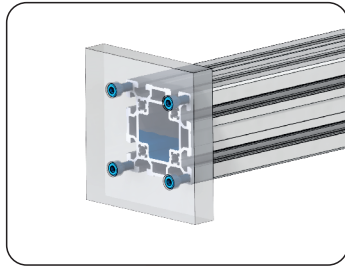
**Oil and Air Slot Feature in Double Slot Profiles**



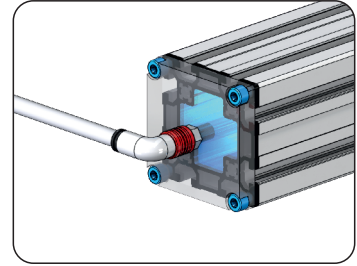
**Oil and Air Transfer Feature with the Help of Records in Multi-Slot Profiles**



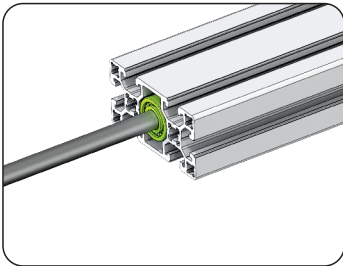
**Threading on External Slots and All Kinds of Connection Part Features in Single Slot Profiles**



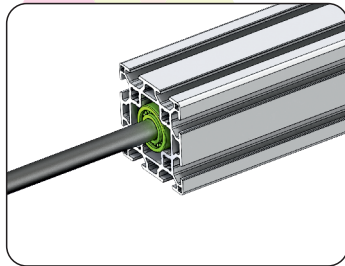
**Threading on External Slots and All Kinds of Connection Part Features in Multi-Slot Profiles**



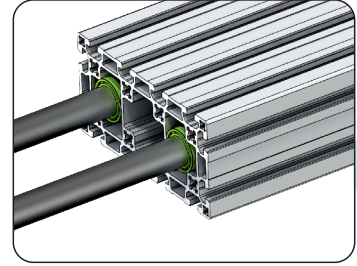
**Ability to Create a Liquid Tunnel to Provide Sealing with a Gasket in Multi-Slot Profiles**



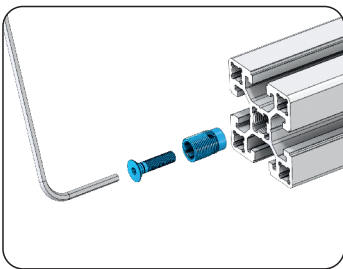
**Shaft Bearing Feature with Bearing in Double Slot Profiles**



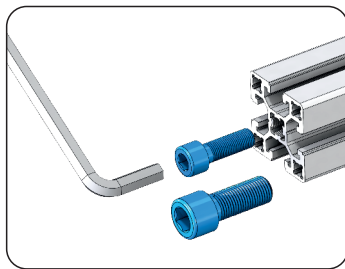
**Shaft Bearing Feature with Bearing in Double Slot Profiles**



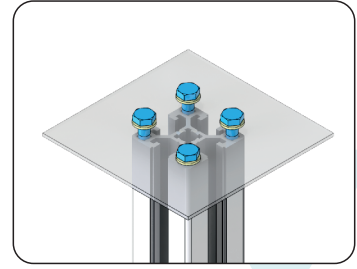
**Double Body Bearing Feature with Double Bearings in Multi-Slot Profiles**



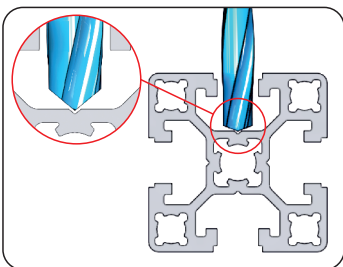
**Ability to Thread the Hub Slot and Install Small Bolts in All Profiles**



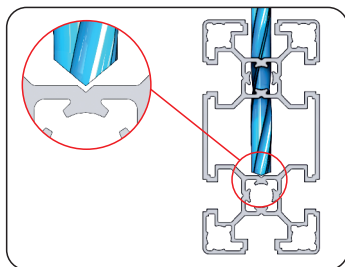
**Ability to Thread the Hub Slot and Install Large Bolts in All Profiles**



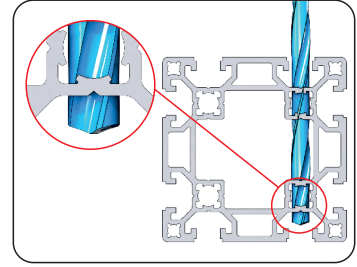
**Connecting All Kinds of Bolts to External Slots in All Profiles**



**Drill Bearing Slot Feature in Single Slot Profiles**



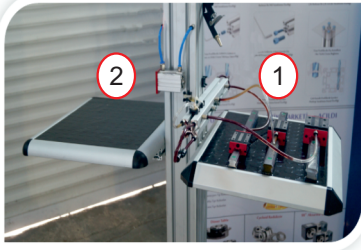
**Internal Drill Bearing Slot Feature in Double Slot Profiles**



**Internal Drill Bearing Slot Feature in Multi-Slot Profiles**

# APPLICATION WAYS OF NEW DESIGN FEATURES

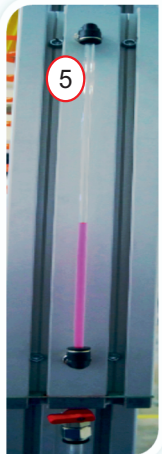
## Air Transfer Feature



1- Lubrication system created using profile grooves

2- In order to operate the parallel connected air cylinders back and forth in our double slot profile group, the forward command is given from the first slot and the reverse command is given from the second slot.

## Chemical Fluid Circulation Feature



It is used to control the circulation and evacuation of oil, water, air, and similar chemical components by attaching records to the profile grooves. Additionally, the liquid level can be controlled.

## Pneumatic System Feature



7- In order to manage the back and forth commands of many air cylinders mounted on the Sigma profile, the pressurized air circulated in the profile grooves can be transferred to the pistons from any desired location.

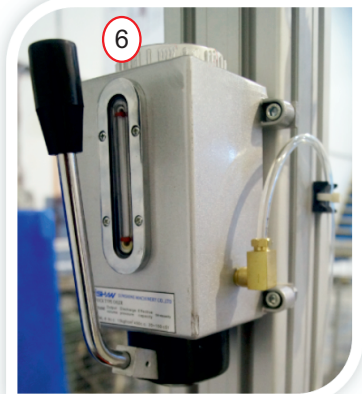
## Air Transfer Feature

3-Ergonomic working conditions are provided to operators working at workstations where a 360-degree rotating pneumatic screw gun is mounted using the center hub of Sigma profiles. In this way, production-life losses are prevented.



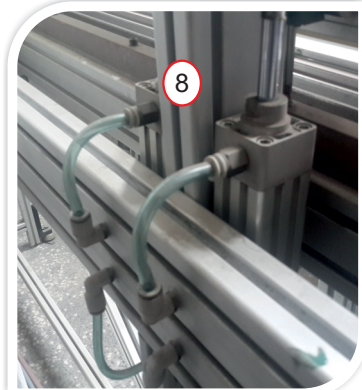
4- The compressed air required for the Air Gun to operate is supplied through sigma profile grooves.

## Chemical Fluid Circulation Feature



6-The lubrication pump is used to ensure oil passages in the profile grooves.

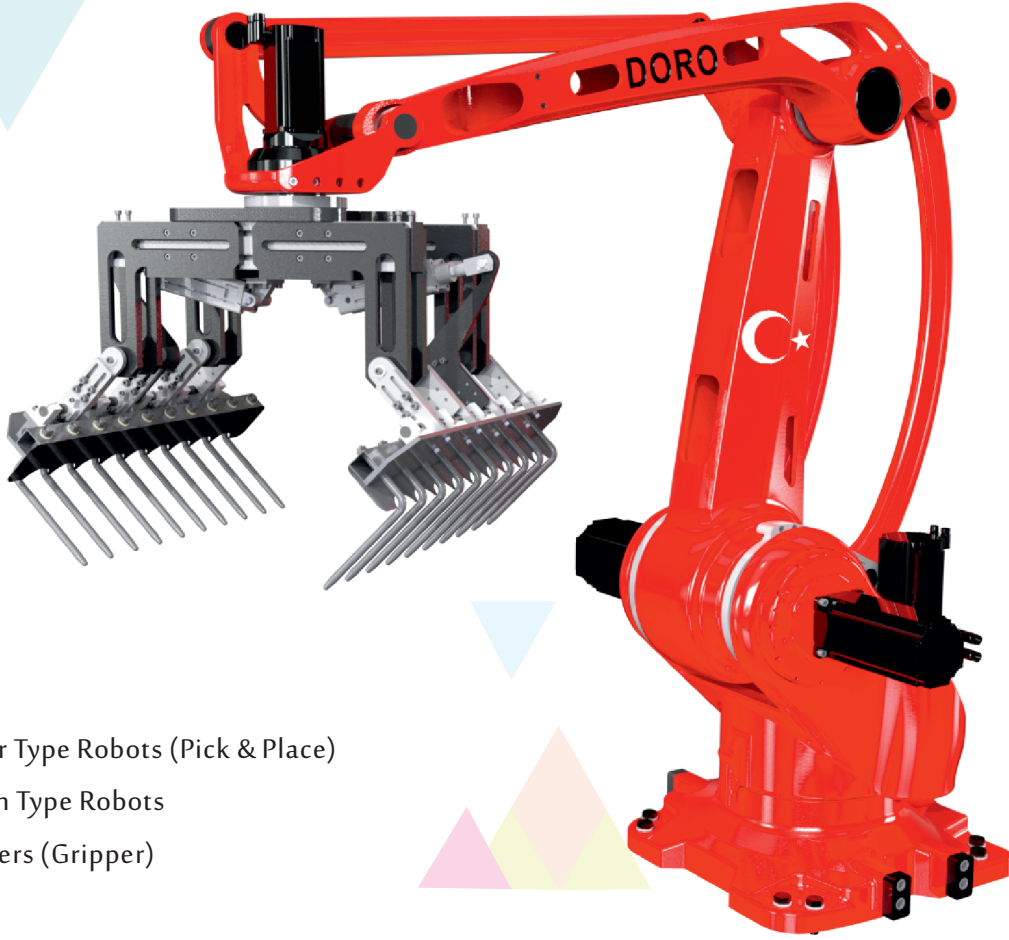
## Pneumatic System Feature



8- It ensures that the compressed air pneumatic cylinders mounted on the Sigma profile are connected to the required positions in the most ergonomic way without long hoses.

*Industrial  
Sigma Profiles  
Revolutionary Innovation in*

# ROBOTIC MARKET



Our Turkey's  
Robot  
Coming Soon

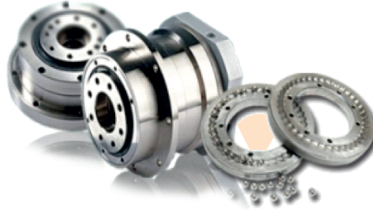
- Palletizer Type Robots (Pick & Place)
- Cartesian Type Robots
- Tip Holders (Gripper)

## Rotary Table



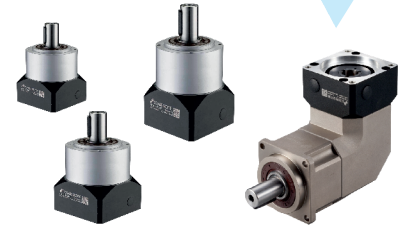
Available in stock up to  
Ø 060 - Ø 085 - Ø 130 - Ø 230 - mm diameter.

## Cycloid Reducers



Different ratios up to  
50-70-90-110-130 are available in our stocks.

## Planetary Reducers



Different ratios up to  
50-70-90-120-155 body are available in our stocks.

### FACTORY

Mahmutbey Mah. Karaoğlanoğlu Cad.  
No:15/17 Bağcılar / İSTANBUL  
Tel: +90 212 480 08 28 Pbx Fax: +90 212 480 08 33  
E-Mail: [info@doguskalip.com.tr](mailto:info@doguskalip.com.tr)

### Gebze Branch

Gaziler Mahallesi İbrahim Ağa Caddesi No:273/1  
Gebze / KOCAELİ  
Tel: +90 262 643 60 40 Fax: +90 262 643 60 50  
E-Mail: [gebze@doguskalip.com.tr](mailto:gebze@doguskalip.com.tr)

### Hadımköy Branch

Alkop San. Sitesi Akçaburgaz Mah. 1592 Sokak A11  
Blok No: 9 - 10 Esenyurt / İSTANBUL  
Tel: +90 212 858 11 13 Fax: +90 212 858 11 14  
E-Mail: [hadimkoy@doguskalip.com.tr](mailto:hadimkoy@doguskalip.com.tr)

### Bayrampaşa Branch

Terazidere Mah. Çiftahavuzlar Cad. Melihbey İşhanı  
No: 36 /6 Bayrampaşa / İSTANBUL  
Tel: +90 212 480 08 21 Pbx Fax: +90 212 480 08 35  
E-Mail: [bayrampasa@doguskalip.com.tr](mailto:bayrampasa@doguskalip.com.tr)

### European Logistics Center.

Poznan / POLAND  
Tel: +48 511 942 810  
E-Mail: [europe@doguskalip.com.tr](mailto:europe@doguskalip.com.tr)

### İkitelli Branch

İkitelli Org. San. Böl. Eskoop San. Sit. C2 Blok No: 48  
Başakşehir / İSTANBUL  
Tel: +90 212 549 24 06 Fax: +90 212 549 24 11  
E-Mail: [ikitelli@doguskalip.com.tr](mailto:ikitelli@doguskalip.com.tr)

### İmes Branch

İmes Sanayi Sitesi C Blok 304 Sokak No: 1  
Yukarı Dudullu - Ümraniye / İSTANBUL  
Tel: +90 216 540 11 23 Fax: +90 216 540 11 25  
E-Mail: [imes@doguskalip.com.tr](mailto:imes@doguskalip.com.tr)

### Bursa Branch

Üçevler Mah. 78. Sokak (220) Akva Tic.Mer.C Blok  
34 Nolu Bağımsız Apartman No:2/A Nilüfer / BURSA  
Tel: +90 224 441 42 16 Pbx Fax: +90 224 441 40 34  
E-Mail: [bursa@doguskalip.com.tr](mailto:bursa@doguskalip.com.tr)

### İzmir Branch

Karacaoğlan Mah. 6169 Sokak No: 7-A  
Işıkkent Bornova / İZMİR  
Tel: +90 232 472 24 61 Pbx Fax: +90 232 472 24 60  
E-Mail: [izmir@doguskalip.com.tr](mailto:izmir@doguskalip.com.tr)